

Our base in PALERMO



General info



Office/Meeting point:

Marina di Villa Igia
Porto Acquasanta - 90142 Palermo



GPS

38°08'62" N
13°22'37" E



VHF Channel

74



Telephone

+39 091 58 06 79

Services in the marina



Weather Forecast:

VHF Channel 68
(continuous listening)



Security Deposit:

Payable at check-in in Cash, Visa
or Mastercard



Fuel station:

IP - Angelo
+39 328 62 20 439



Base Opening:

From Mon to Sun



Other services in the Marina:

Shops, Parking, Electricity (for each berth), Restaurant,
Water (fresh water for each berth), Toilets and showers
(with hot water).



Check Out:

On Friday at 4 pm

How to reach

By car

A20 Messina-Palermo (exit Palermo) A29
Palermo-Mazara (exit Palermo)
A 19 Catania-Palermo (exit Palermo)

By plane

Falcone-Borsellino – Palermo (30 km)
www.gesap.it
Trapani-Birgi (120 km) www.airgest.it

By bus

From Palermo airport to Palermo city center: Prestia e Comandè (departure every 30 minutes)
www.prestiaecomande.it
From Trapani airport to Palermo city center: Autoservizi Salemi www.autoservizisalemi.it

With private transfer (max 8 pax, one way)

APT Palermo – Marina di Villa Igia €120

Rent a car

Auto Europa www.autoeuropa.it

Our staff in Palermo

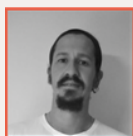


Dario Nucatolo

Base Manager

+39 337 1223021

IT/EN

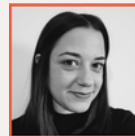


Matteo Di Fiore

Base Support

+39 337 1223021

IT/EN



Mara Lospennato

Booking/Customer Service

+39 328 0045810

IT/EN/DE

Our Fleet in Palermo

Bavaria Cruiser 51 – “Aurelia”
Bavaria Cruiser 50 – “Giorgina”
Bavaria Cruiser 46 – “Annù”
Bavaria Cruiser 46 – “Musa”

”Bavaria Cruiser 51 – “Agata”
Grand Soleil 45 – “Aida 2”
Dufour 455 – “Azzurra”
Bavaria Cruiser 40 – “Ginevra”

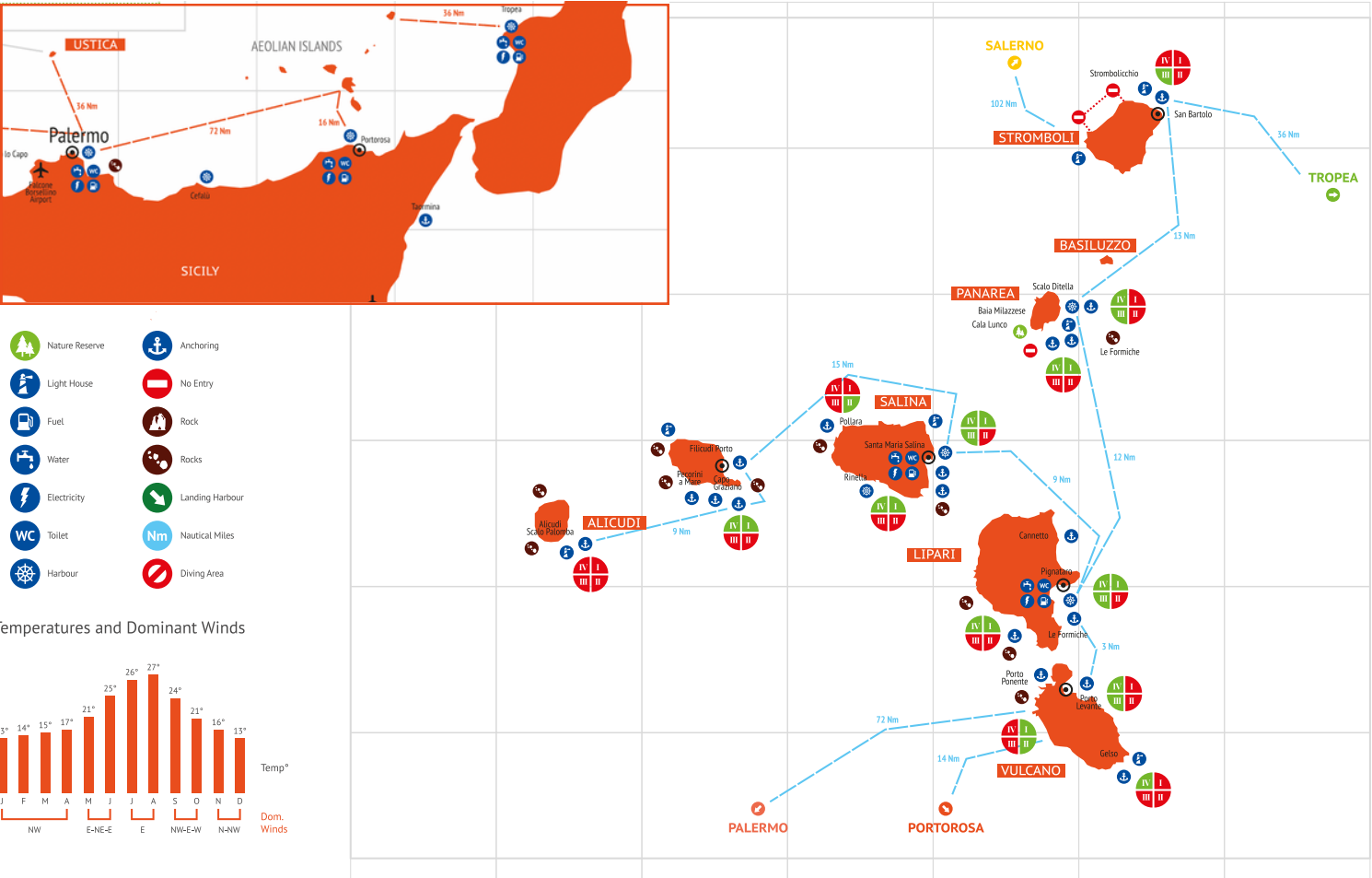
Dufour 382 Grand Large – “Eleonora”
Lagoon 42 – “Memì”
Dufour 390 Grand Large “Tiche”

Discover the Aeolian Islands

Our base in Palermo is 72 NM away from the Aeolian Islands and in order to fully enjoy this journey, we recommend a rejuvenating stop in the picturesque town of Cefalù (32 NM from our Marina di Palermo), an enchanting medieval village that is a UNESCO World Heritage Site. It was once a fishing village and with its golden beaches and the aromas of typical dishes that intoxicate the streets of the city, it will relax and fascinate you. Must-see places to visit in Cefalù include: The seafront, the medieval washhouse in Via Vittorio Emanuele, Porta Pescara, Bastion of Capo Marchiafava, The Cathedral, and The Rocca di Cefalù.

For diving enthusiasts:

The Island of Ustica, 36 NM away from our base in Palermo, is a true natural paradise for diving and snorkeling enthusiasts. In fact, the island is the first Marine Park established in the Mediterranean, a Protected Marine Area since 1986: its shores are rich in secret caves, coves, and colorful fish. Its most beautiful beaches are Cala Sidoti, Caletta Santoro, Spiaggia del Faro, and the Natural Pool of Ustica.



The Aeolian Islands take their name from Aeolus, the Greek god of winds, who made them his dwelling place among the seven islands scattered along the northeastern coast of Sicily. Known as the "seven pearls of the Mediterranean," they are considered a UNESCO World Heritage site due to their extraordinary natural beauty and unique volcanic origins.

Thanks to their geographic location, the Aeolian Islands are an ideal destination for a short trip packed with adventure. They offer fascinating geological features (two of the islands are active volcanoes!), a rich history, and a multitude of Greek myths and legends. Moreover, they provide ample opportunities to relax on gorgeous beaches, take in breathtaking views, trek up mountains and along the coast, and indulge in delicious cuisine and exquisite desserts and wines.



LIPARI

It is the largest island in the Aeolian Islands and its landscapes are characterized by the white of pumice stone that was extracted from the quarries. It is the island with the most beaches, easily reachable by tender from the boat and ideal as a location for a night at anchor.

The most beautiful and not to be missed are: -the White beaches and the Papesca beach, located near the quarry; -the Praia di Vinci beach, located right in front of the Faraglioni of Pietra Lunga and Pietra Menalda, and is probably the most beautiful and spectacular on the whole island; -the Canneto beach, from which you can reach Punta Jalera, where an ancient monastery stands overlooking a breathtaking panorama.



VULCANO

It is the third largest island in the Aeolian Islands, the southernmost off the coast of Sicily, and the closest to our Marina, just 5 NM from Portorosa (about 2h30min by boat). The island is actually a volcano that overlooks the entire Aeolian archipelago and the smell of sulfur is characteristic of the still-present secondary volcanic activity. The black sand beaches of the bays of Porto Levante and Porto Ponente are characteristic, ideal for safe anchoring, as well as the Gelso Bays of the Cannitello beach where you can also enjoy great cocktails served in bars equipped for the summer season.



PANAREA

It is the smallest but most frequented by VIPs. With the islets of Basiluzzo, Spinazzola, Lisca Bianca, Dattilo, Bottaro, Lisca Nera, and the rocks of Panarelli and Formiche, it forms a microarchipelago between Lipari and the island of Stromboli. Panarea owes its name to the physical characteristics of the terrain, "Panaraia" (completely rocky) and is ideal to visit by sailboat. On June 28th and 29th, Panarea celebrates S. Pietro, the patron saint of the island. The statue of the saint is carried on the shoulders of the faithful along the main streets of the island and then on a boat to continue the procession.



SALINA

It is the greenest island in the Aeolian archipelago and immediately recognizable for its twin craters, rich in vegetation. Its name derives from a lake in the fraction of Lingua in the municipality of S. Marina di Salina from which salt was extracted but, nowadays, the commercially relevant activities on the island are mainly the cultivation of Malvasia grapes and capers. Its main port is Santa Marina where there is also a marina, while on the southwest side is the port of Rinella.

The most famous beach is Pollara, located below the steep amphitheater-shaped cliff overlooking the sea and made famous by Massimo Troisi in the movie "Il postino". Lastly, Salina is very loved by snorkeling enthusiasts because of the shallow seabed and underwater volcanic activity.



STROMBOLI

It is the only active explosive and eruptive volcano in the Aeolian Islands. Viewed from the sea, one cannot help but be mesmerized by the "Sciara del Fuoco": a dusty canyon where eruptive debris flows, and the lack of nighttime lighting on the island makes this spectacle even more majestic. Stromboli is rich in beaches, both with lava sand and pebbles, some equipped with beach facilities and restaurants, others more wild and secluded, particularly appreciated by nudists.



Moorings in Aeolian Islands

Salina

Porto delle Eolie
Santa Maria Salina
+39 090 90 22 167
+39 090 98 43 473
+39 349 38 01 150
VHF Channel 11

Stromboli

North Boe Camp "Sabbia Nera"
+39 090 98 63 90
VHF Channel 16/77

Stromboli

Molotre – Servizi nautici e campo boe
+39 090 98 63 90

Vulcano

Centro Nautico Baia Levante
+39 393 91 51 901
+39 339 33 72 795
+39 366 73 62 8314

Lipari

Porto Pignataro srl
38° 28'55" N 14° 57'88" E
+39 090 98 80 354
+39 339 84 97 800
VHF Channel 74

ALICUDI

It is the farthest island (almost 34 miles from Lipari).

On Alicudi, time seems to have stopped in a semi-uncontaminated natural dimension where people live in a simple way, far from the frenzy of modern life, on a surface area of 5.2 km², where the Mount Filo D'Arpa stands out.

There are no equipped beaches, banks or pharmacies on the island; in the small inhabited center (populated by a hundred people), the only commercial activities are two grocery stores and as many restaurants on the harbor. With its cliffs overlooking the sea, the absence of coves and shelters, the island of Alicudi reveals all its beauty from the sea, and it is therefore advisable to discover it by boat.

FILICUDI

The sea of Filicudi is rich in coves and small bays with easily accessible small beaches by boat. The most beautiful beaches are those of Porto and Pecorini, made up of pebbles, although, depending on the winter storms, it may happen that large portions of them are transformed into beaches of very fine black volcanic sand, like those of Stromboli. This island is considered a must-visit destination for diving, with different levels of difficulty; from easy dives at 25 meters of depth, to difficult or expert dives that go beyond 50 meters. The underwater archaeological museum is an exclusive attraction of the island that can be visited with the diving staff who are based in Filicudi.

Panarea

Campo boe "Sea Panarea srl"
+39 366 45 81 688
+39 338 58 64 150

Filicudi

Campo boe "I Delfini" – Nino Terrano Via
Pecorini Mare
+39 340 14 84 645
+39 090 98 89 077

Filicudi

Campo boe – "La boa"
+39 340 76 47 999

Stromboli

Magmatrek – Escursioni
+39 090 98 65 768
+39 335 80 21 375

Nearby Moorings

Tropea

38° 40'81" N – 15° 54'31" E Viale Raf Vallone snc 89861
Francesco Murnura +39 328 0659996 ITA/FR/GER
VHF Channel 09

Vibo Valentia

Pontile Marina Azzurra
Via Emilia 73, Vibo Valentia (VV) (10 nm north) +39 0963 57 27 84
+39 338 33 79 448